



Submittal Data Information

HTF Series Heat Exchangers

201-053

18" Diameter 2 & 4 Pass

SUPERSEDES: June 15, 1994

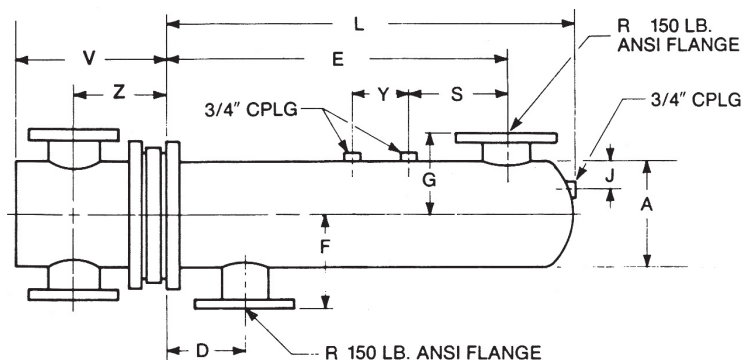
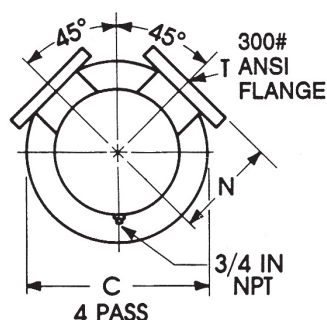
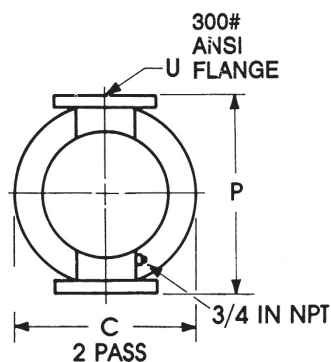
Effective: March 11, 2021

NOTE: Only 2 & 4 pass units available.

Item No	Model No	Pass	GPM Tubes	Temp. In	Temp. Out	P.D. Tubes	Vel. Tubes	GPM Shell	Temp. In	Temp. Out	P.D. Shell	Vel. Shell

Tube Fluid

Shell Fluid



Model Number		Fabricated Steel Heads								Dimensions (inches)												Heating Surface (Sq. Ft.)	Approx. Shipping Weight (Lbs.)
2 Pass	4 Pass	2 Pass				4 Pass				2 and 4 Pass													
		V	Z	P	U	V	Z	N	T	A	C	D	E	F	G	J	L	R	S	Y			
18206HTF	18406HTF	22	14%	30	6F	22	13	15	4F	18	28	11½	24	16½	16½	1%	36½	8F	11	8	130.7	935	
18208HTF	18408HTF	22	14%	30	6F	22	13	15	4F	18	28	11½	36	16½	16½	1%	48½	8F	13	12	177.0	1069	
18210HTF	18410HTF	22	14%	30	6F	22	13	15	4F	18	28	11½	48	16½	16½	1%	60½	8F	13	12	223.4	1208	
18212HTF	18412HTF	22	14%	30	6F	22	13	15	4F	18	28	11½	60	16½	16½	1%	72½	8F	13	12	269.7	1351	
18214HTF	18414HTF	22	14%	30	6F	22	13	15	4F	18	28	11½	72	16½	16½	1%	84½	8F	13	12	316.1	1470	
18216HTF	18416HTF	22	14%	30	6F	22	13	15	4F	18	28	11½	84	16½	16½	1%	96½	8F	13	12	362.4	1611	
18218HTF	18418HTF	22	14%	30	6F	22	13	15	4F	18	28	11½	96	16½	16½	1%	108½	8F	13	12	408.8	1752	
18220HTF	18420HTF	22	14%	30	6F	22	13	15	4F	18	28	11½	108	16½	16½	1%	120½	8F	13	12	455.1	1893	

MATERIALS OF CONSTRUCTION (Unless otherwise indicated, standard will be furnished)

	Standard	Optional
Shell	Steel	304ss, 316ss
Head	Fabricated Steel	Fabricated 304ss/316ss
Tubes	3/4x20 BWG 90/10 Cu Ni	304ss, 316ss
Tube Sheet	Steel	304ss, 316ss
Separators	Steel	Naval Brass, 304ss, 316ss, 90/10 Cu Ni
Working Pressure	Tubes 400 psi Shell 150 psi	Consult Factory Consult Factory
Max. Temperature	450°F	Consult Factory
All units have ASME "U" Stamp on name plate.		



All dimensions shown are subject to change and should not be used for pre-piping. Contact your local Taco representative should certified dimensional drawings be required.



Taco, Inc., 1160 Cranston Street, Cranston, RI 02920 | Tel: (401) 942-8000 | FAX: (401) 942-2360

Taco (Canada), Ltd., 8450 Lawson Road, Suite #3, Milton, Ontario L9T 0J8 | Tel: (905) 564-9422 | FAX: (905) 564-9436

Visit our web site: www.TacoComfort.com | Printed in USA | ©2021 Taco, Inc.

